

Follow-up questions from the CEES new scoping form training:

1. Who are the primary contacts for the Linking Planning & NEPA forms system?

The primary contacts are Brian Hare and Brian Wall from PennDOT's Center for Program Development:

Brian Hare
Phone: (717) 783-9359
E-mail: bhare@pa.gov

Brian Wall
Phone: (717) 772-0827
E-mail: bwall@pa.gov

2. How do I get access to the system? Will consultants have access to the LPN system?

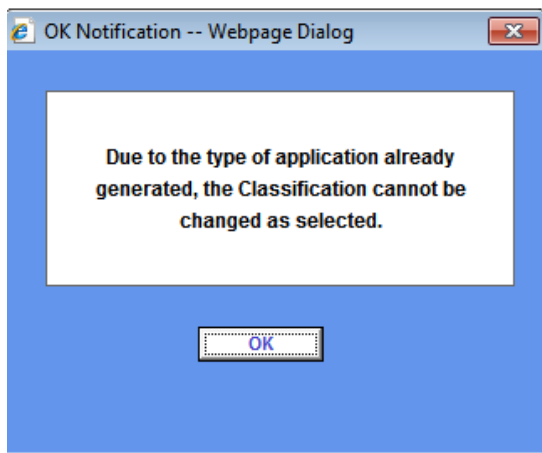
PennDOT business partners should contact either Brian Hare or Brian Wall for details on how to get access.

3. Will the cultural resource professionals (CRPs) have access to the system?

Yes. Ira Beckerman and Drew Ames will coordinate with the CRPs regarding access to the LPN system.

4. How does one down-scope from an approved CE 2 scoping to a BRPA evaluation?

An attempt to create a BRPA evaluation from an approved CE 2 (or 1b or 1a) scoping will result in the following message:



To create a BRPA evaluation from an approved non-BRPA scoping, create a new evaluation. Then, in the remarks section of the BRPA applicability matrix, briefly explain why the project evaluation is different from the scoping document and list the CE package number of the approved scoping document.

Please contact Drew Ames if you have additional questions:
Phone: (717)705-1481; e-mail: johname@pa.gov